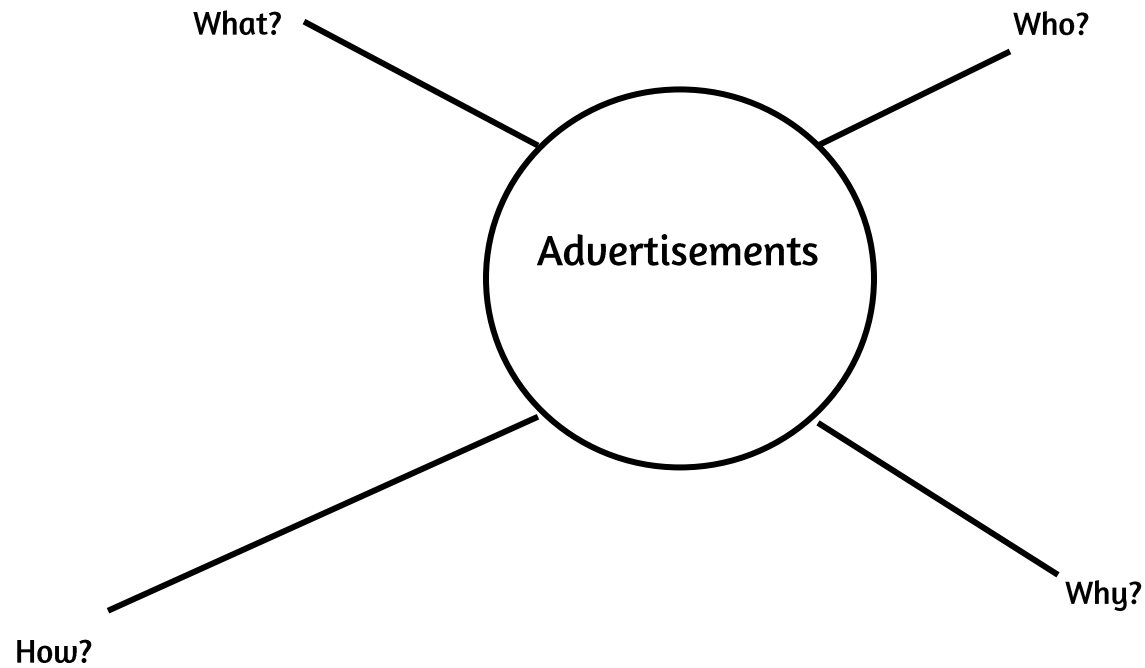




Lesson 13.4: Historic Postcards

Name _____

Advertisements Mind Map

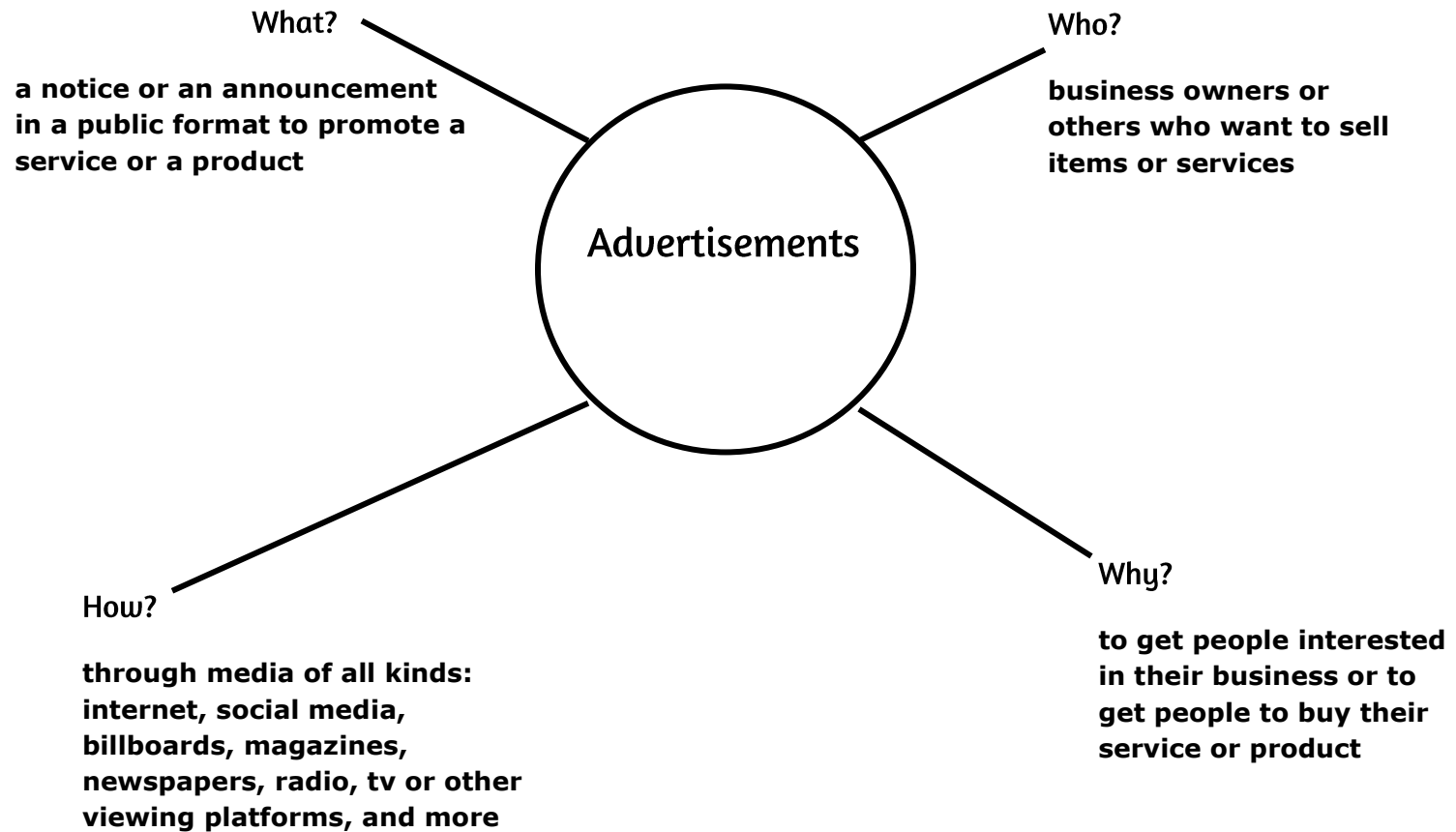




Lesson 13.4: Historic Postcards

Name _____ Answer Key _____

Advertisements Mind Map





Lesson 13.4: Historic Postcards



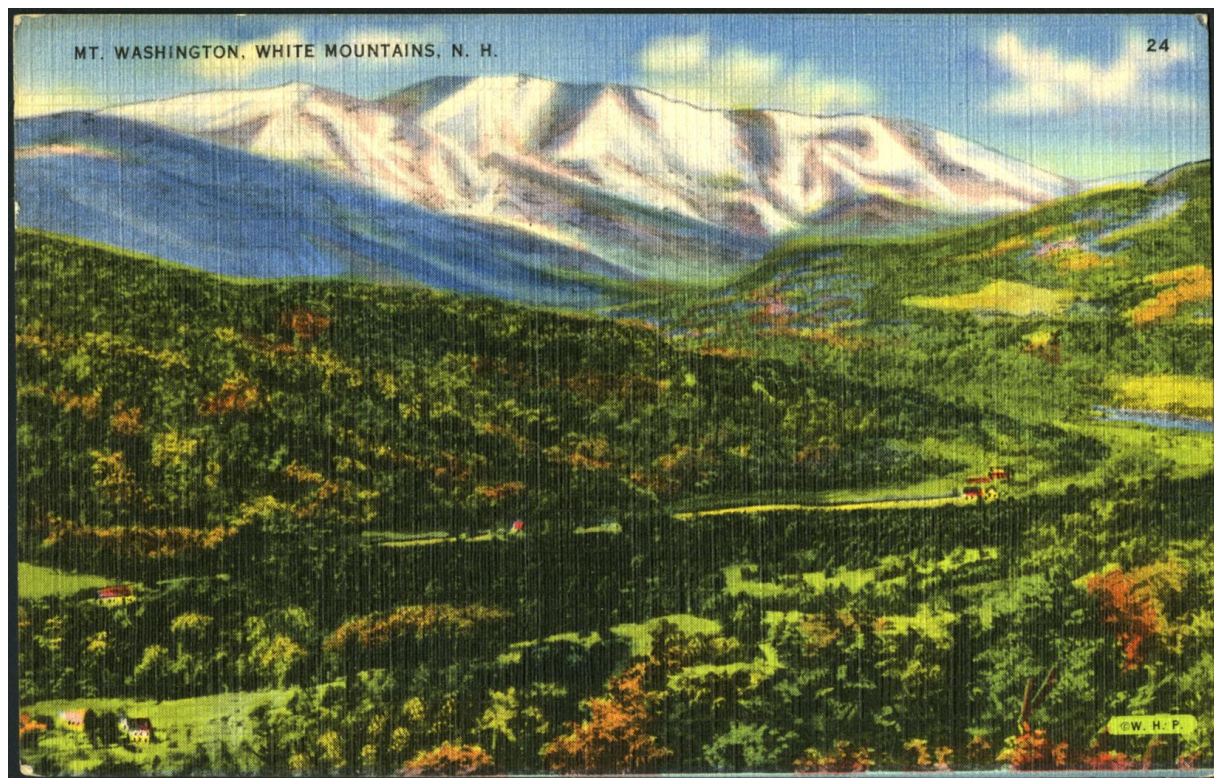
Veranda of Oceanic Hotel, circa 1873–1915
Source: New Hampshire Historical Society



The Presidential Range with Bretton Woods Hotel, circa 1915–1953
Source: New Hampshire Historical Society

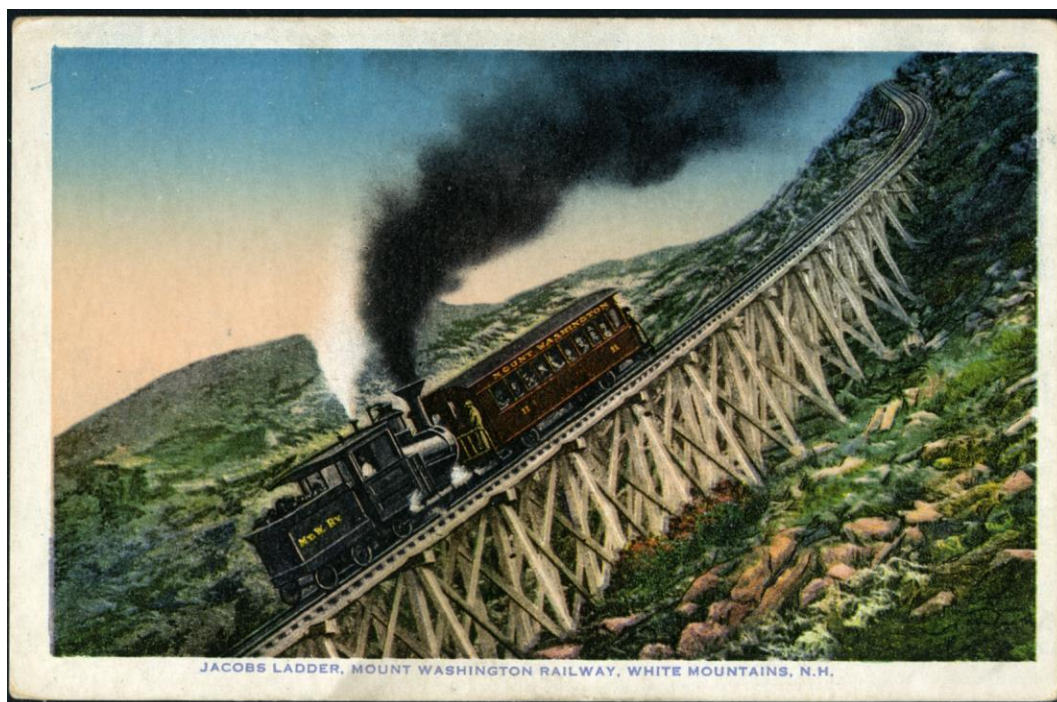


Lesson 13.4: Historic Postcards



Mount Washington, 1938

Source: New Hampshire Historical Society

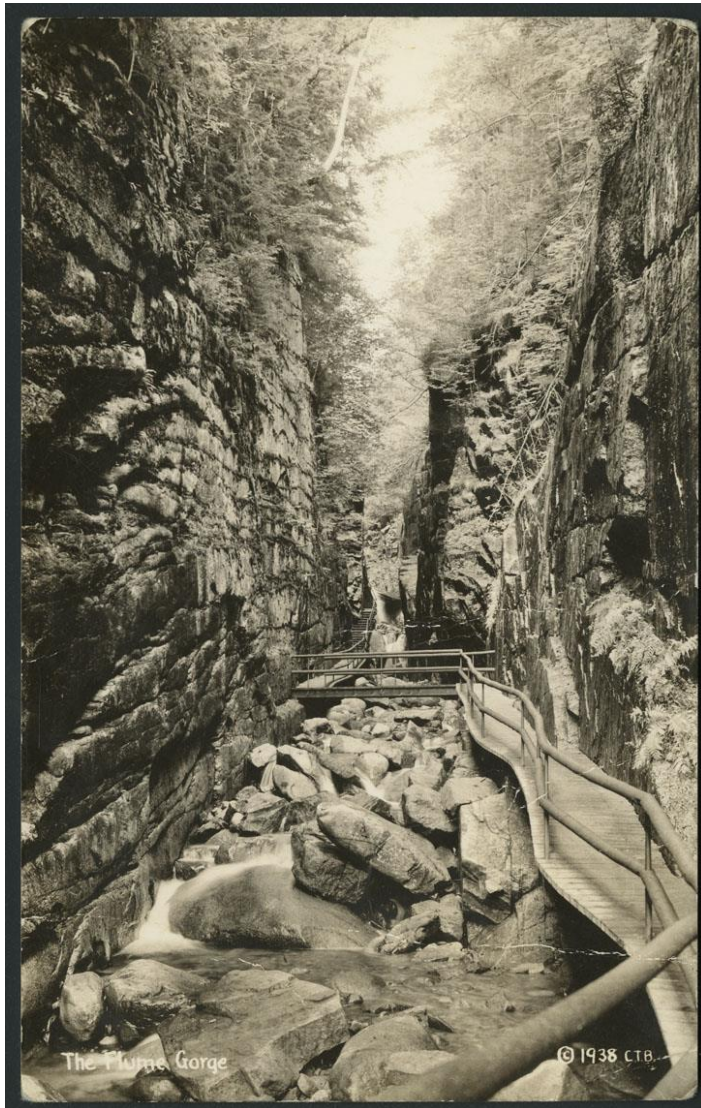


Jacob's Ladder on the Cog Railway, circa 1876–1938

Source: New Hampshire Historical Society



Lesson 13.4: Historic Postcards



The Flume Gorge, 1938
Source: New Hampshire Historical Society



Old Man of the Mountain, 1920
Source: New Hampshire Historical Society



Lesson 13.4: Historic Postcards



Mai's Cabins on Lake Winnisquam, circa 1920–1950
Source: New Hampshire Historical Society



Covered Bridge in Groveton, circa 1852–1939
Source: New Hampshire Historical Society



Lesson 13.4: Historic Postcards



Boar's Head on Hampton Beach, circa late 1800s–early 1900s
Source: New Hampshire Historical Society



New Hampshire State House, circa 1898–1952
Source: New Hampshire Historical Society

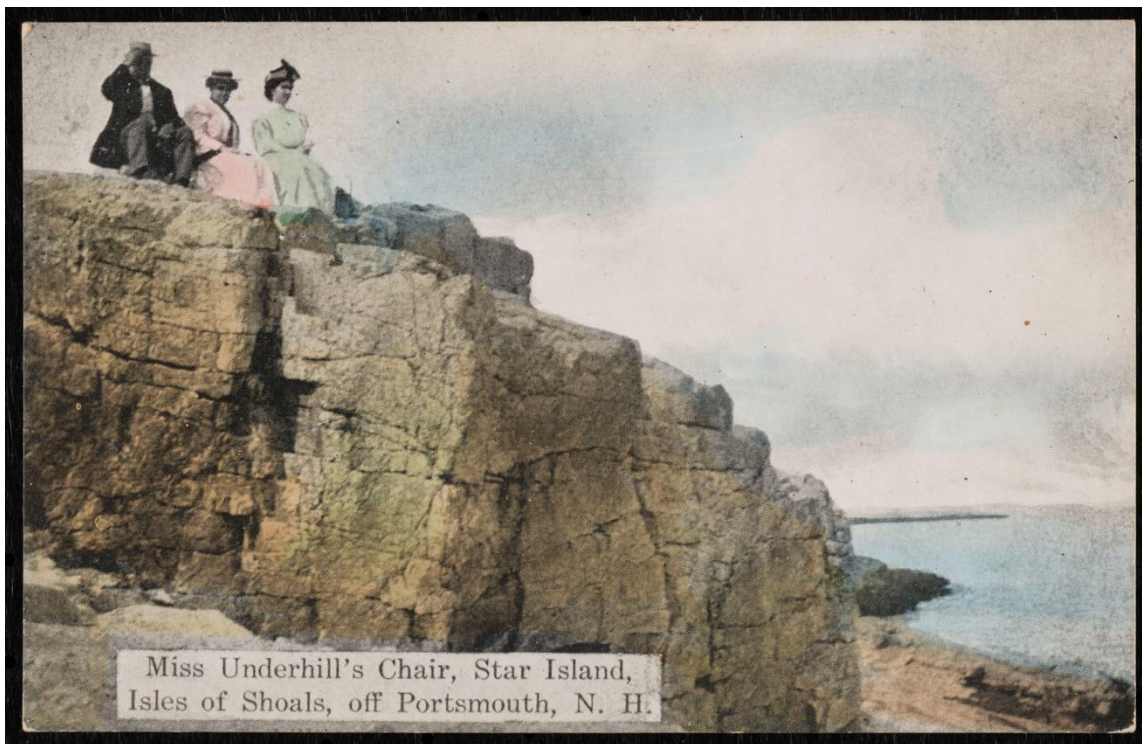


Lesson 13.4: Historic Postcards



"Kearsarge" on Lake Sunapee, circa late 1800s–early 1900s

Source: New Hampshire Historical Society



Miss Underhill's Chair, circa late 1800s–early 1900s

Source: New Hampshire Historical Society



Lesson 13.4: Historic Postcards



Main Street in Durham, undated
Source: New Hampshire Historical Society



White Island, Isles of Shoals, circa 1878–1930s
Source: New Hampshire Historical Society



Lesson 13.4: Historic Postcards



Star Island, circa 1876–1915

Source: New Hampshire Historical Society



Dam in Lakeport, undated

Source: New Hampshire Historical Society



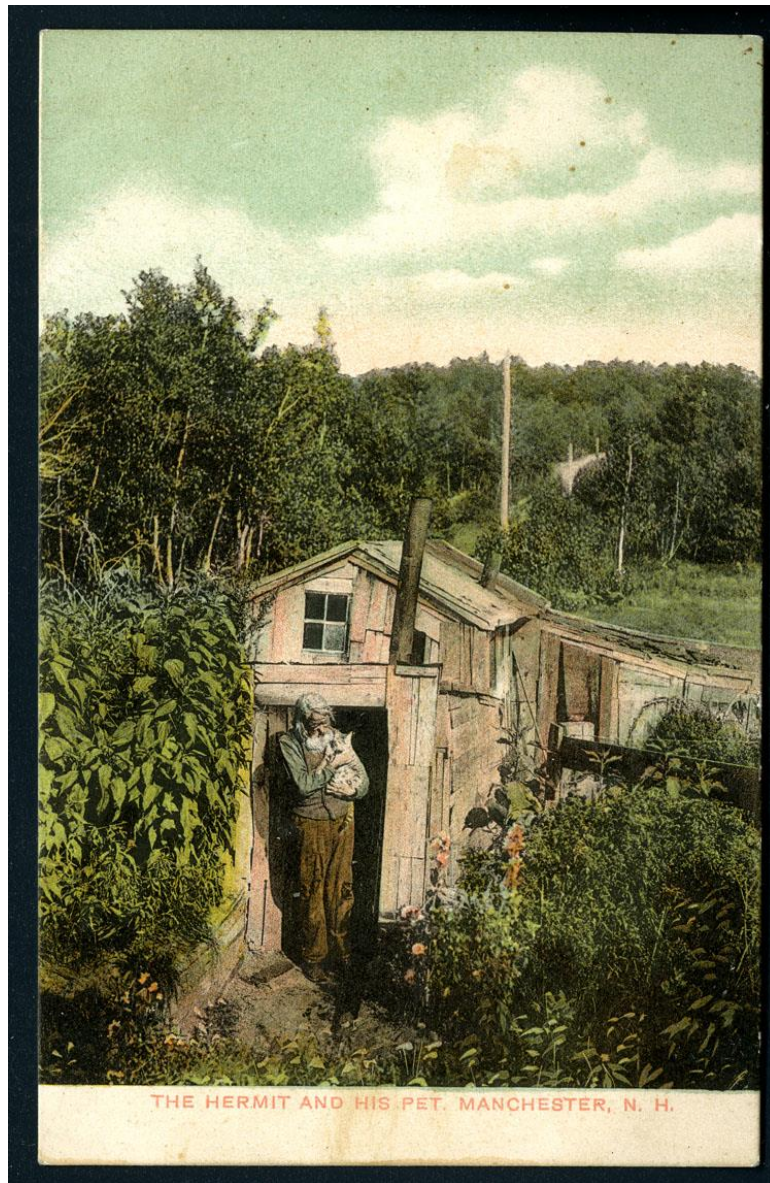
Lesson 13.4: Historic Postcards



Wolfeboro Bay, circa 1898-1952
Source: New Hampshire Historical Society



Lesson 13.4: Historic Postcards



THE HERMIT AND HIS PET. MANCHESTER, N. H.

Manchester Hermit with Pet, 1909
Source: New Hampshire Historical Society



Lesson 13.4: Historic Postcards

Name _____

A Postcard of _____

Your town needs a new postcard and has asked for designs. How will you best showcase your beautiful and interesting town? Remember, tourists will buy this postcard and send it to people back home, so make it a good advertisement of your town!

Talk with your group members and list at least five things about your town you think might work for a postcard.

1. _____ Why?

2. _____ Why?

3. _____ Why?

4. _____ Why?

5. _____ Why?

Decide which ideas you'll use for your postcard, and how you will set it up. Will you draw or print the pictures? Will there be words? Use the back of the page to create your rough draft.





Lesson 13.4: Historic Postcards

Postcard Rough Draft

A large, empty rectangular box with a dark blue border, intended for students to draw their postcard rough draft.