



Lesson 12.3: Mapping Jobs and Immigrants Groups

Name \_\_\_\_\_

## Industry Match Up

Great Wave immigrants to New Hampshire were often employed in one of the major industries operating across the state. Do you know what that work looked like? Cut out the set of labels and industry images. Match each image with the label that describes what it shows.

**Textile Mills**

**Logging Operations**

**Granite Quarrying**

**Shoe Manufacturing**



Lesson 12.3: Mapping Jobs and Immigrants Groups





Lesson 12.3: Mapping Jobs and Immigrants Groups

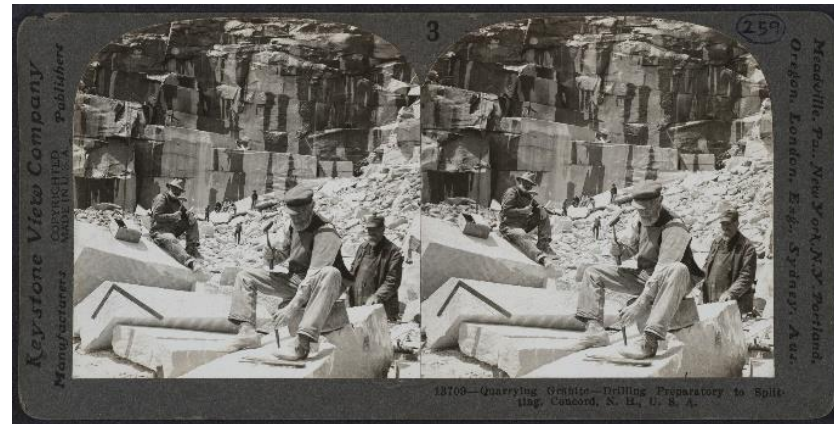
Name \_\_\_\_\_ Answer Key \_\_\_\_\_

## Industry Match Up



Logging Workmen and  
Horse Team, undated  
Source: New Hampshire  
Historical Society

**Logging Operations**



Granite Quarry Workers,  
circa 1845-1930  
Source: New Hampshire  
Historical Society

**Granite Quarrying**



Shoe Factory Workers, circa  
1897-1929  
Source: New Hampshire  
Historical Society

**Shoe Manufacturing**



Textile Mill Workers, circa  
1900-1934  
Source: New Hampshire  
Historical Society

**Textile Mills**



Lesson 12.3: Mapping Jobs and Immigrants Groups

Name \_\_\_\_\_

## Mapping Industries in New Hampshire

The four major industries of 19th- and early 20th-century New Hampshire were located in many towns throughout the state. This chart lists some of the locations for each industry. The industry locations are a layer of data you will add to a base map of New Hampshire. Your new map will give you a sense of how the industries were distributed across the state.

1. Choose a different color for each industry and use it to fill in the space on the chart.
2. Examine the map and find the towns listed for each industry.
3. Shade in the appropriate towns with the color you chose for each industry.
4. Complete the map key with colors and names for each industry.
5. Complete the compass rose with cardinal directions.
6. Give your map a title in the outlined box at the top of the page.

### Logging Operations

Berlin  
Northumberland

Color for map:

### Textile Mills

Dover  
Laconia  
Manchester  
Nashua  
Rochester

Color for map:

### Shoe Manufacturing

Derry  
Manchester  
Newport  
Rochester

Color for map:

### Granite Quarrying

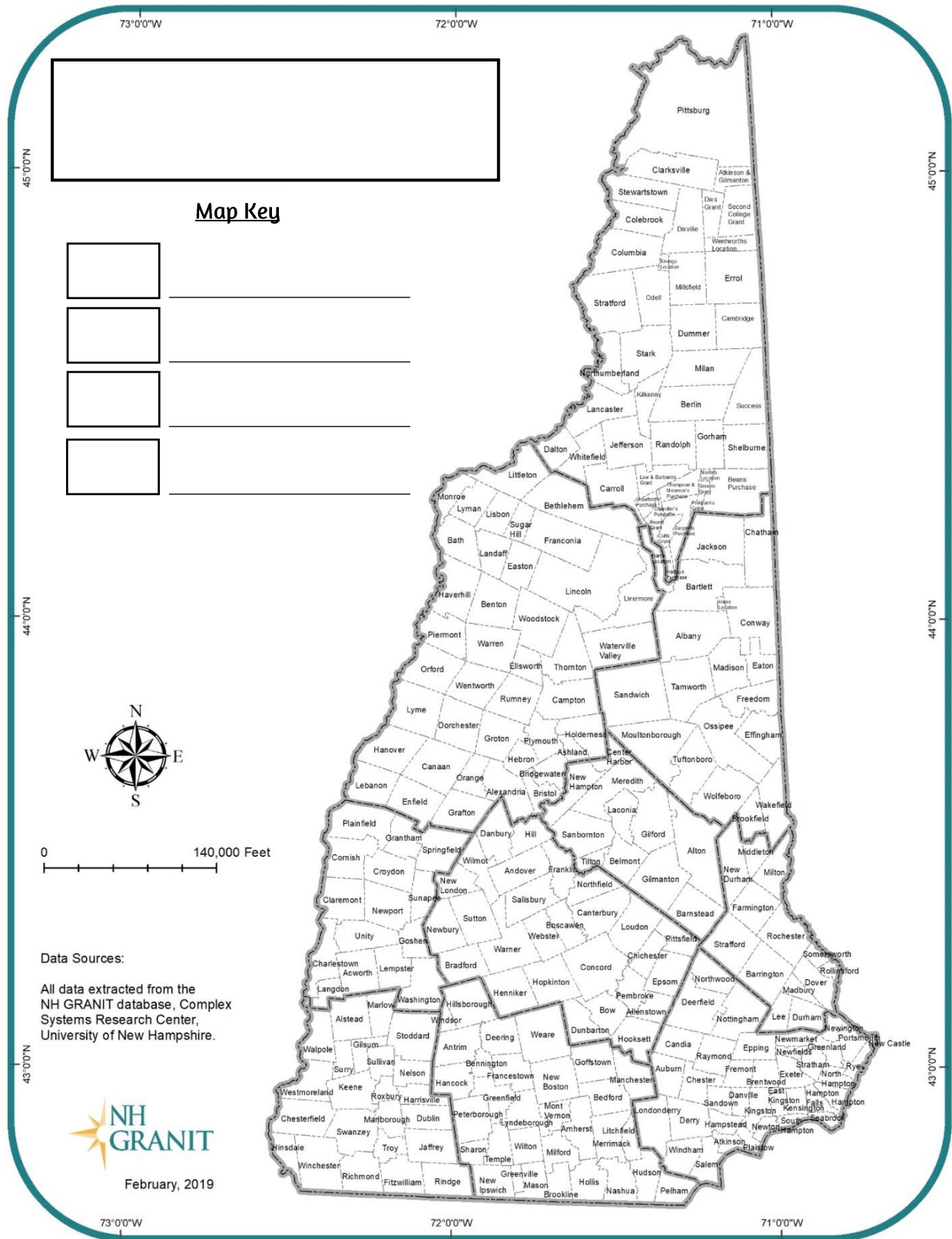
Concord  
Conway  
Nashua

Color for map:





## Lesson 12.3: Mapping Jobs and Immigrants Groups





## Major Industries in 19th-century New Hampshire

- Logging Operations
- Textile Mills
- Shoe Manufacturing
- Granite Quarrying



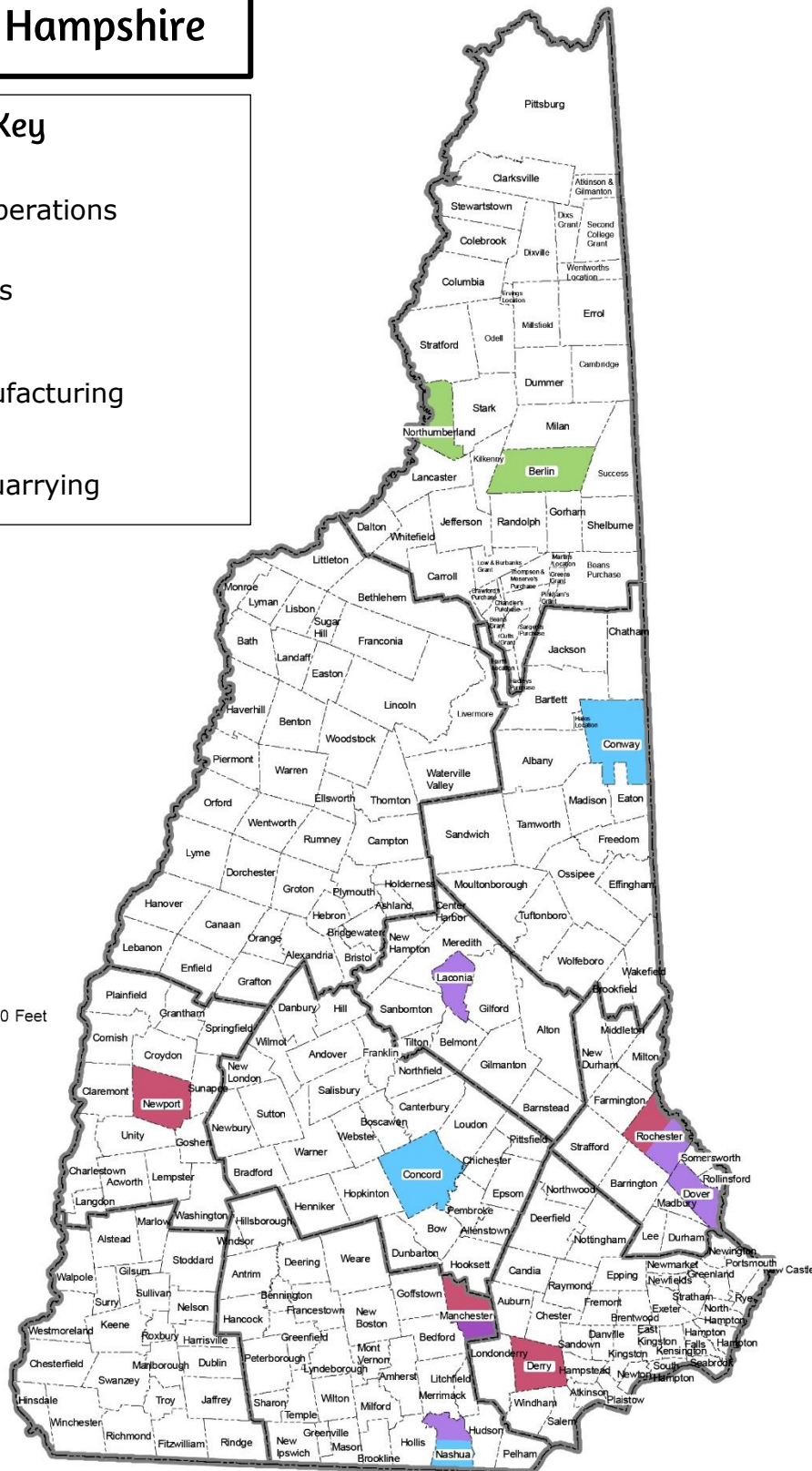
A horizontal number line with tick marks at 0, 30,000, 60,000, 90,000, 120,000, and 150,000. The label "0" is at the left end and "150,000 Feet" is at the right end. The line is divided into 5 equal segments by 4 interior tick marks.

Data Sources:

All data extracted from the NH GRANIT database, Complex Systems Research Center, University of New Hampshire.



November, 2007



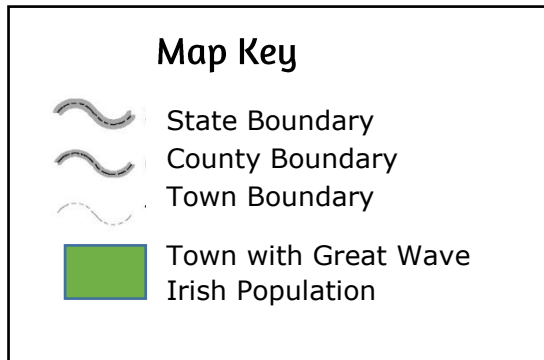






Lesson 12.3: Mapping Jobs and Immigrants Groups

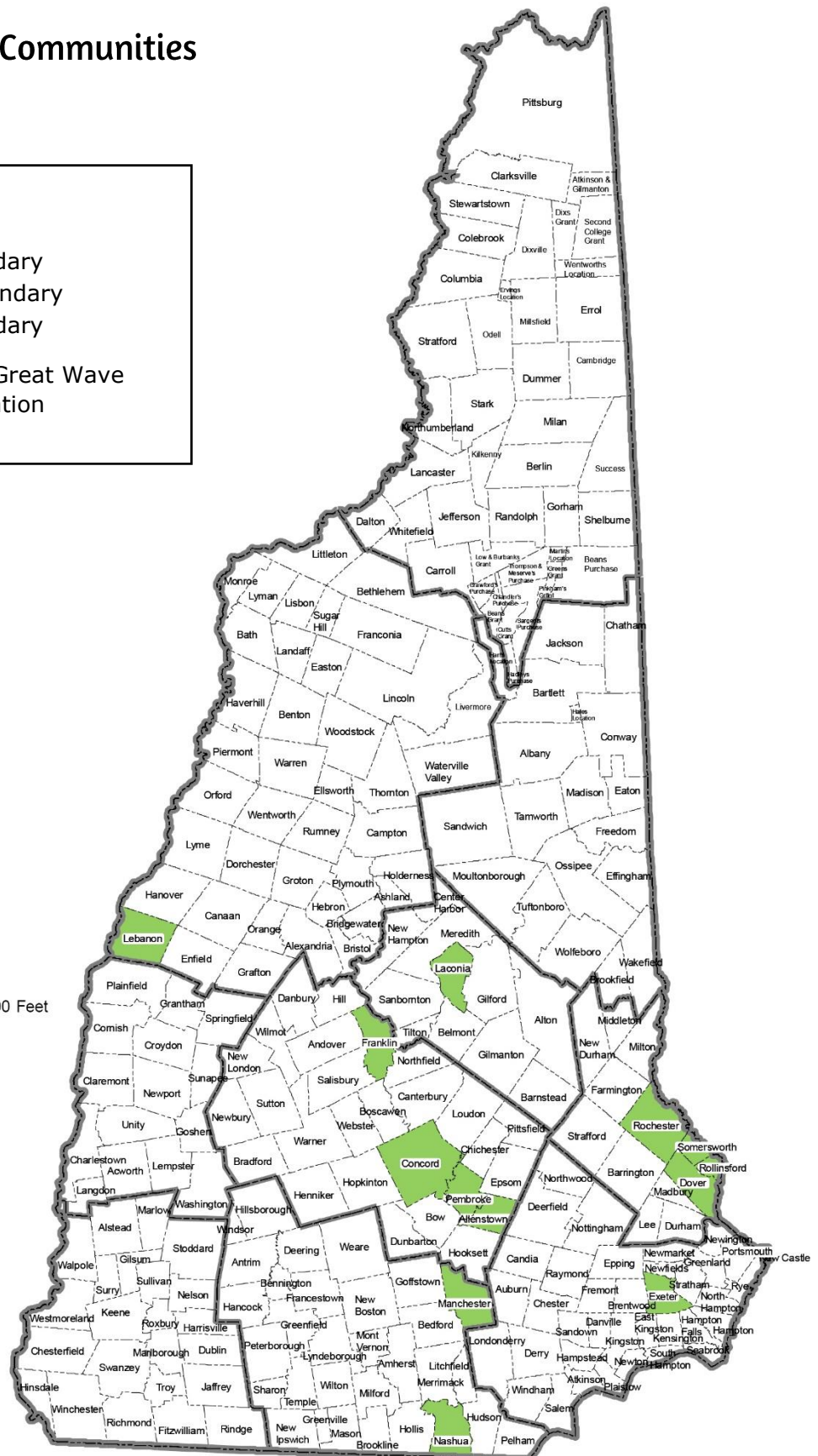
## Great Wave Irish Communities



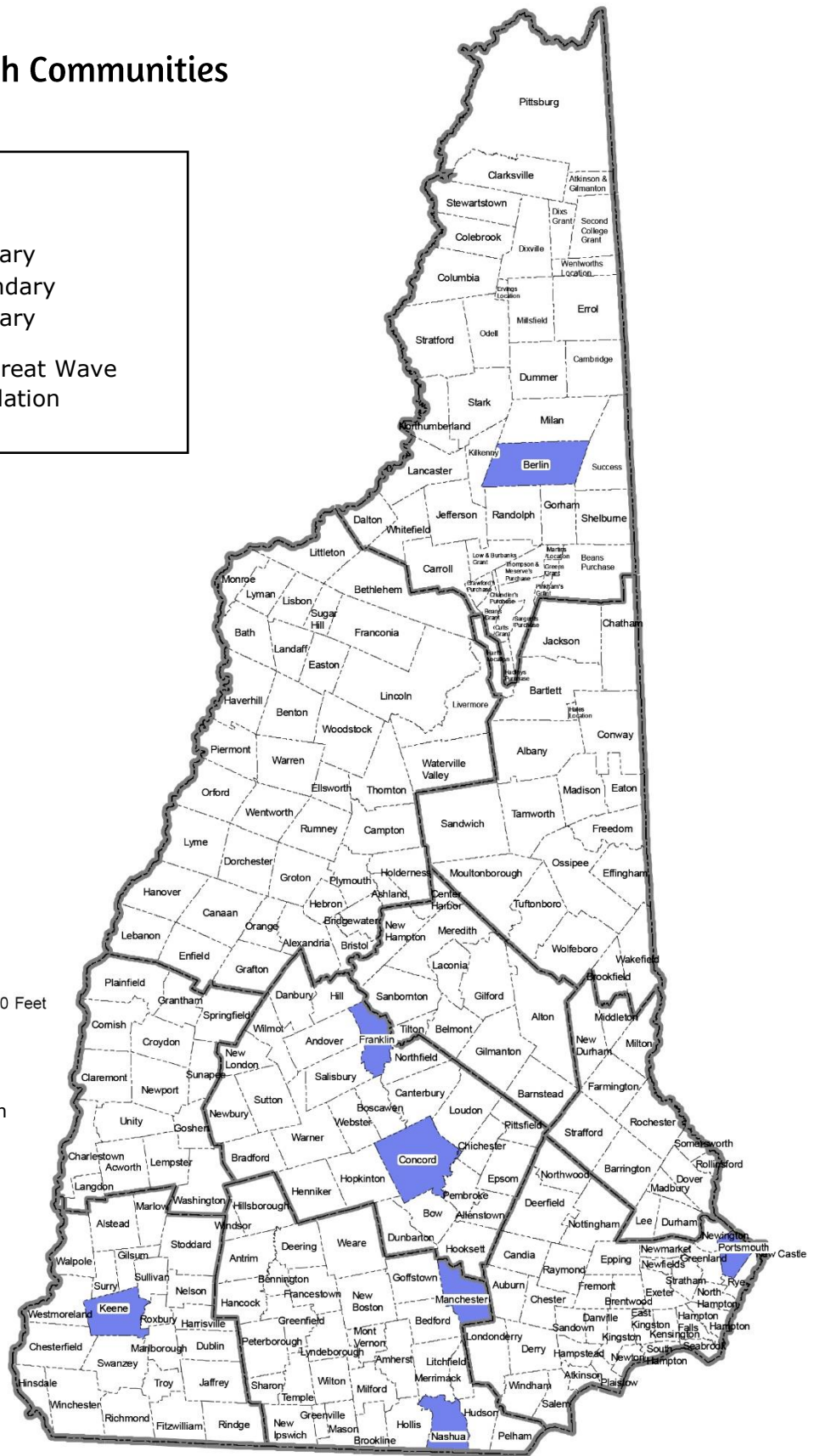
0 150,000 Feet

Base map data extracted from NH Granit database, Complex Systems Research Center, University of New Hampshire. Demographic data added by New Hampshire Historical Society

February 2019



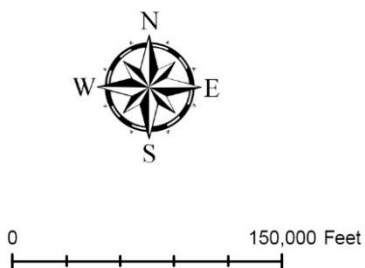
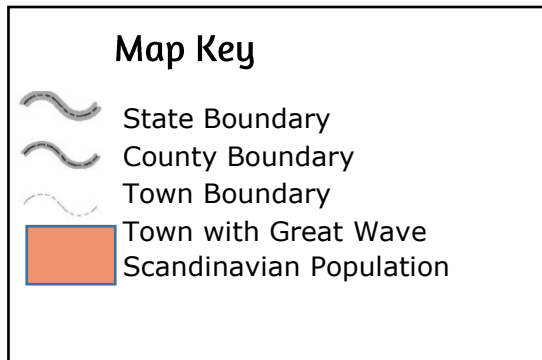






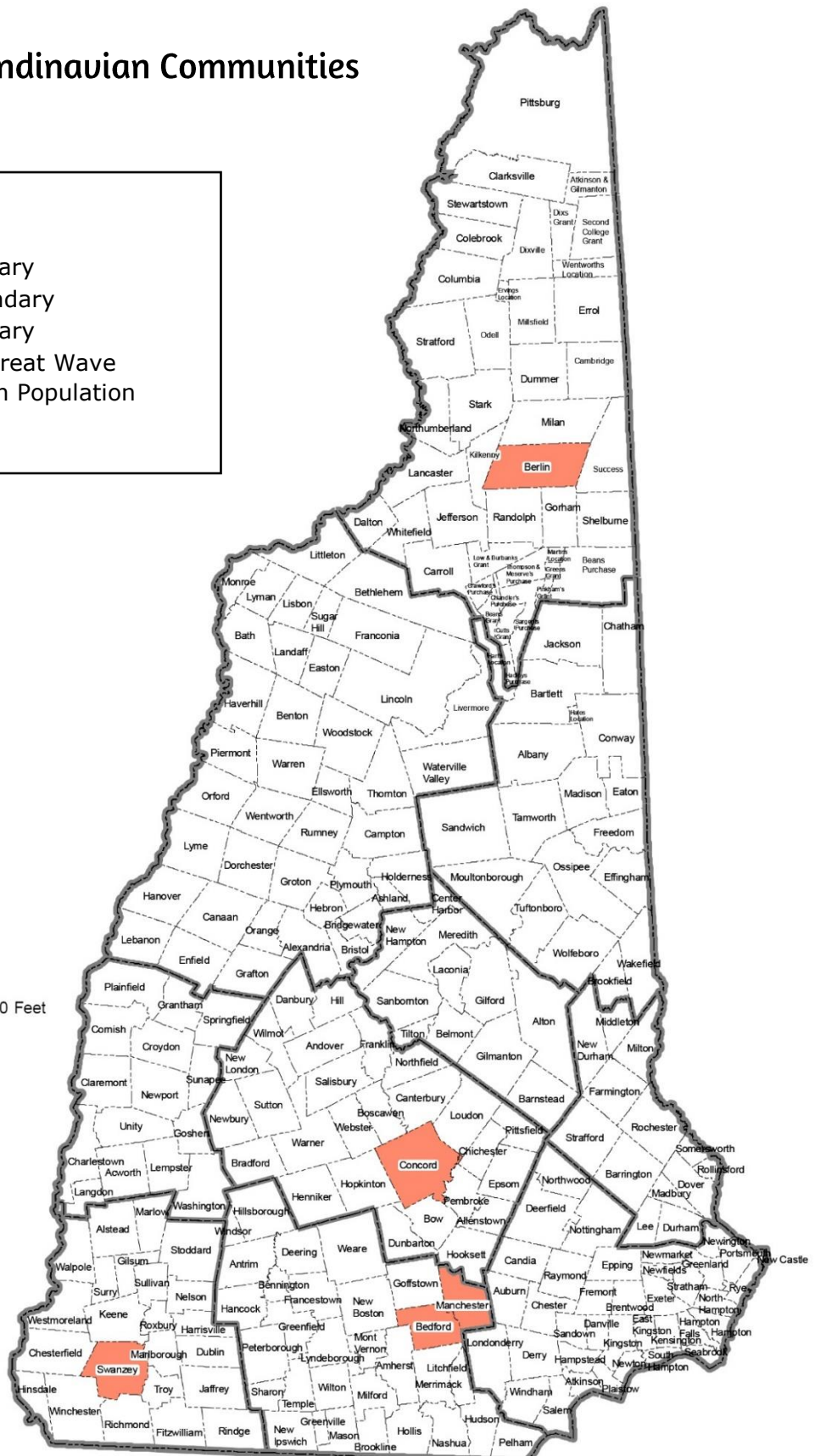
Lesson 12.3: Mapping Jobs and Immigrants Groups

## Great Wave Scandinavian Communities



Base map data extracted from NH Granit database, Complex Systems Research Center, University of New Hampshire. Demographic data added by New Hampshire Historical Society

February 2019





Lesson 12.3: Mapping Jobs and Immigrants Groups

Name\_\_\_\_\_

### Connecting Groups and Industries

During the Great Wave, immigrants from many countries settled in New Hampshire. They often settled in towns because of the work available in that area. Look at your map: it shows towns where a specific immigrant group established communities. Compare the map of immigrant group communities with your map of 19th-century New Hampshire industries. Then complete the questions and tasks below.

1. Which Great Wave immigrant group are you analyzing?
2. Circle towns on your industry map where that immigrant group established communities. Which towns feature industries and your immigrant group?
3. Do you notice a pattern? Is there a particular industry that seems to align with where your immigrant group settled?
4. Reflection: Why else might people who immigrated from the same country live and work in the same community? What are some advantages and disadvantages to this?







Lesson 12.3: Mapping Jobs and Immigrants Groups

Name \_\_\_\_\_ Answer Key \_\_\_\_\_

## Connecting Groups and Industries

During the Great Wave, immigrants from many countries settled in New Hampshire. They often settled in towns because of the work available in that area. Look at your map: it shows towns where a specific immigrant group established communities. Compare the map of immigrant group communities with your map of 19th-century New Hampshire industries. Then complete the questions and tasks below.

1. Which Great Wave immigrant group are you analyzing?

**Answers will vary**

2. Circle towns on your industry map where that immigrant group established communities. Which towns feature industries and your immigrant group?

**French-Canadian:** Berlin, Laconia, Manchester, Nashua, Rochester, Dover

**Scandinavian:** Berlin, Concord, Manchester

**Jewish:** Berlin, Concord, Manchester, Nashua

**Irish:** Manchester, Concord, Nashua, Dover, Laconia, Rochester

3. Do you notice a pattern? Is there a particular industry that seems to align with where your immigrant group settled?

**Answers will vary**

4. Reflection: Why else might people who immigrated from the same country live and work in the same community? What are some advantages and disadvantages to this?

**Disadvantages:** May not interact with as many other immigrant groups or settled Americans. May not learn as much English and/or customs of New Hampshire because they would speak their own languages.

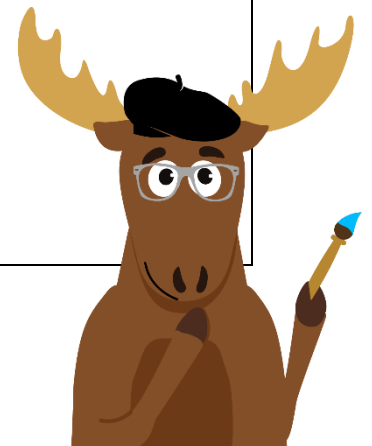
**Advantages:** Would have established a sense of community with other immigrants of the same culture and would be comfortable with friends and family. Would have more in common with someone from their immigrant group than with someone outside their group. Could support and help each other in a new place with different expectations.



Lesson 12.3: Mapping Jobs and Immigrants Groups

What are the advantages to living in a community where you speak the same language and share cultural traditions with many people? What are the disadvantages to living in such a community? Record your ideas in the chart.

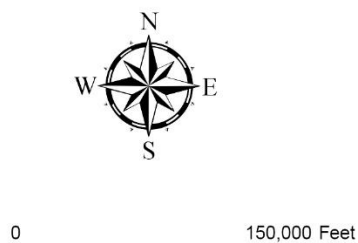
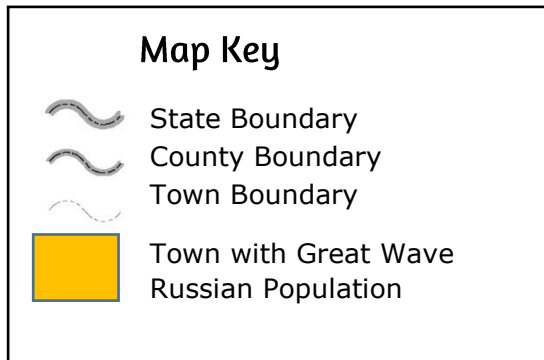
| Advantages | Disadvantages |
|------------|---------------|
|            |               |





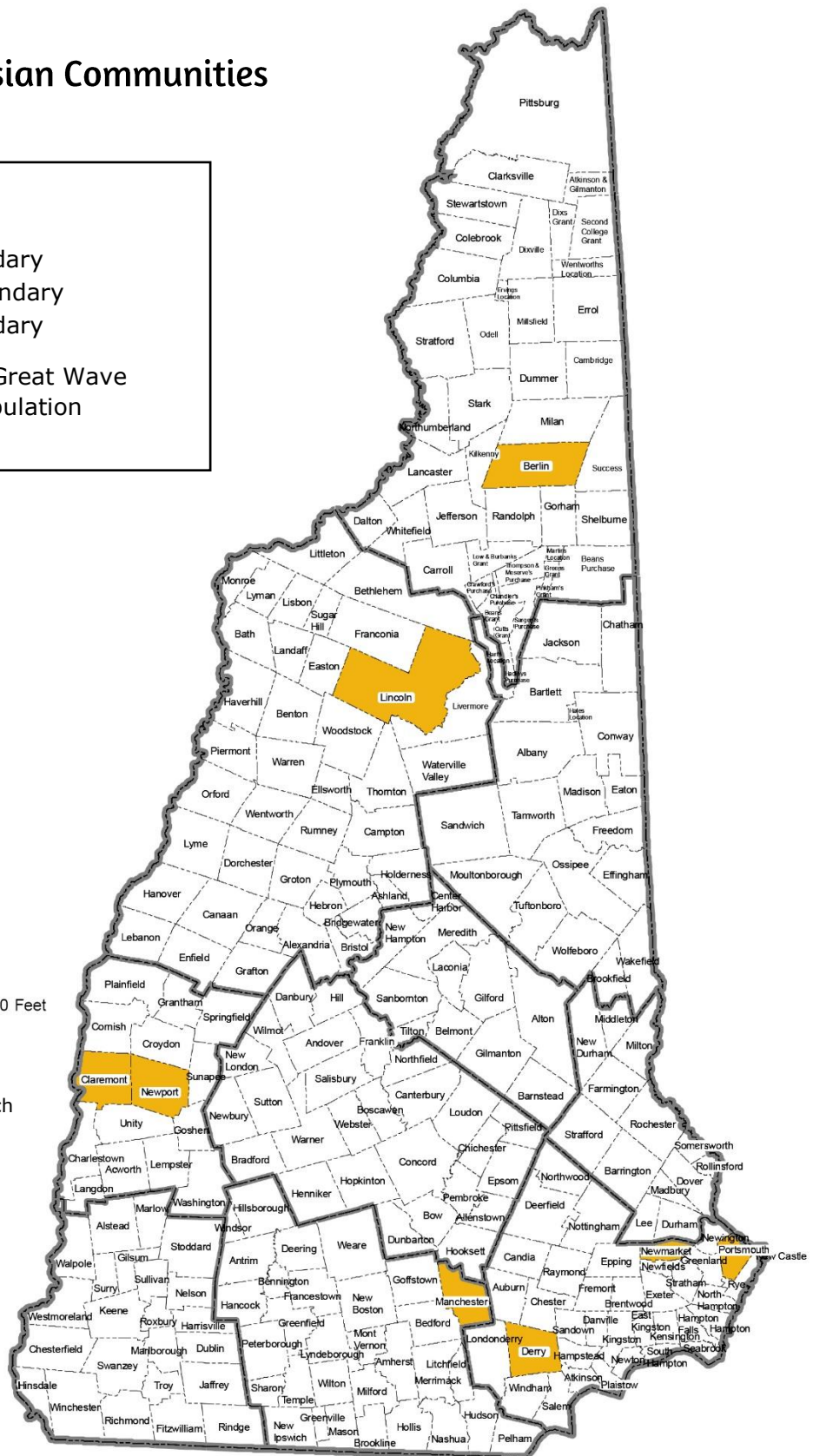
Lesson 12.3: Mapping Jobs and Immigrants Groups

## Great Wave Russian Communities



Base map data extracted from NH Granit database, Complex Systems Research Center, University of New Hampshire. Demographic data added by New Hampshire Historical Society

February 2019

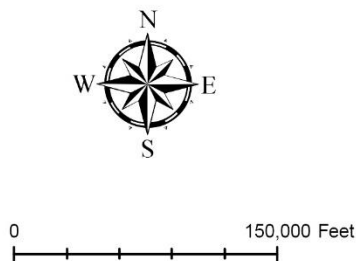
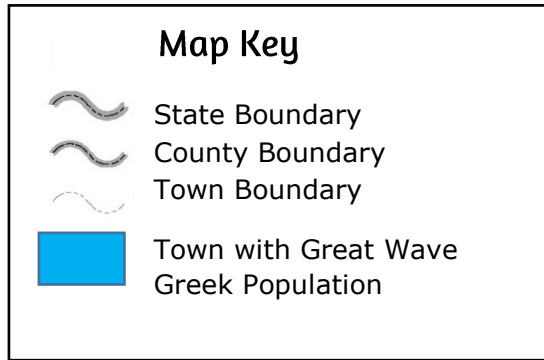






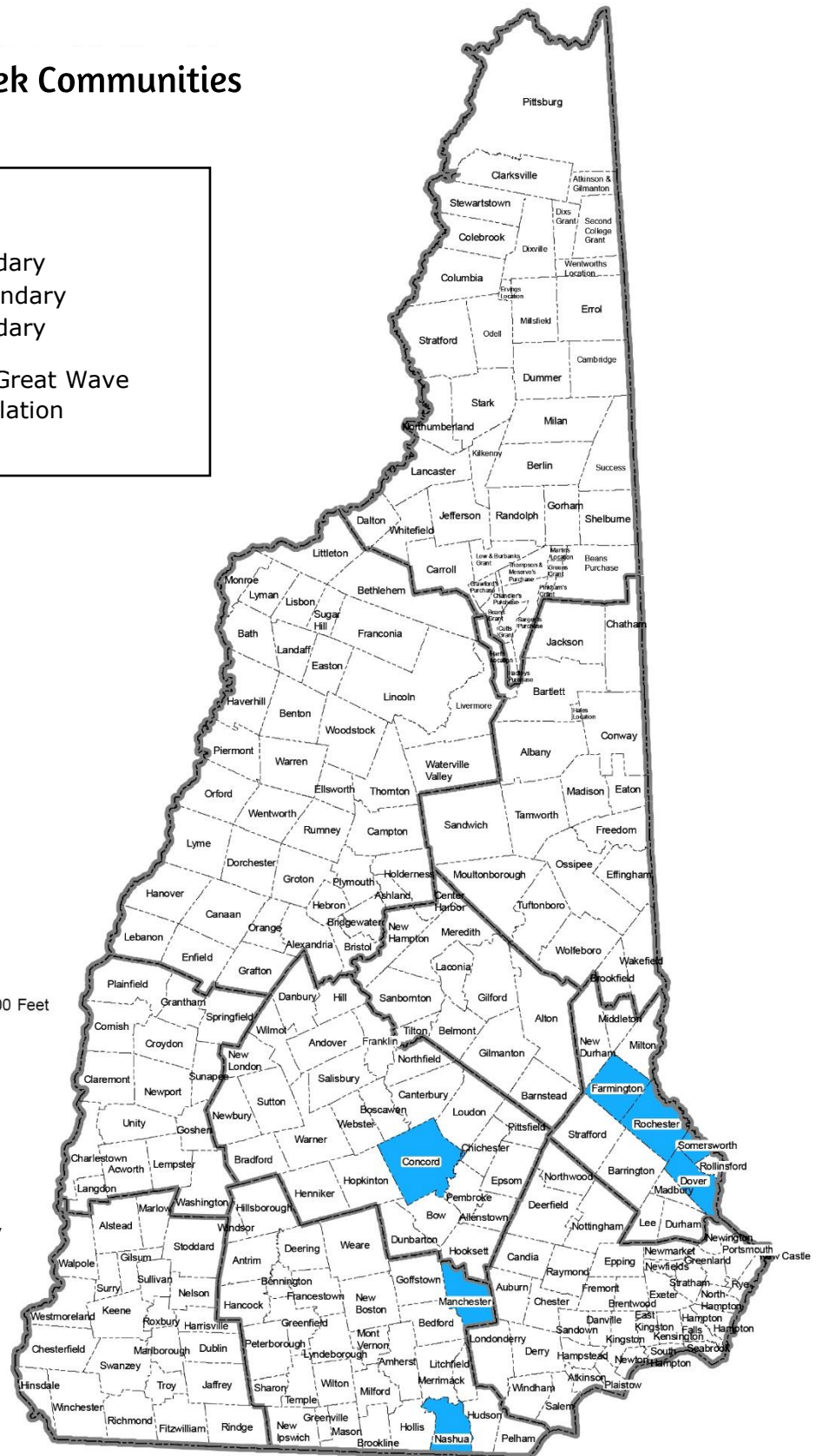
Lesson 12.3: Mapping Jobs and Immigrants Groups

## Great Wave Greek Communities



Base map data extracted from NH Granit database, Complex Systems Research Center, University of New Hampshire. Demographic data added by New Hampshire Historical Society

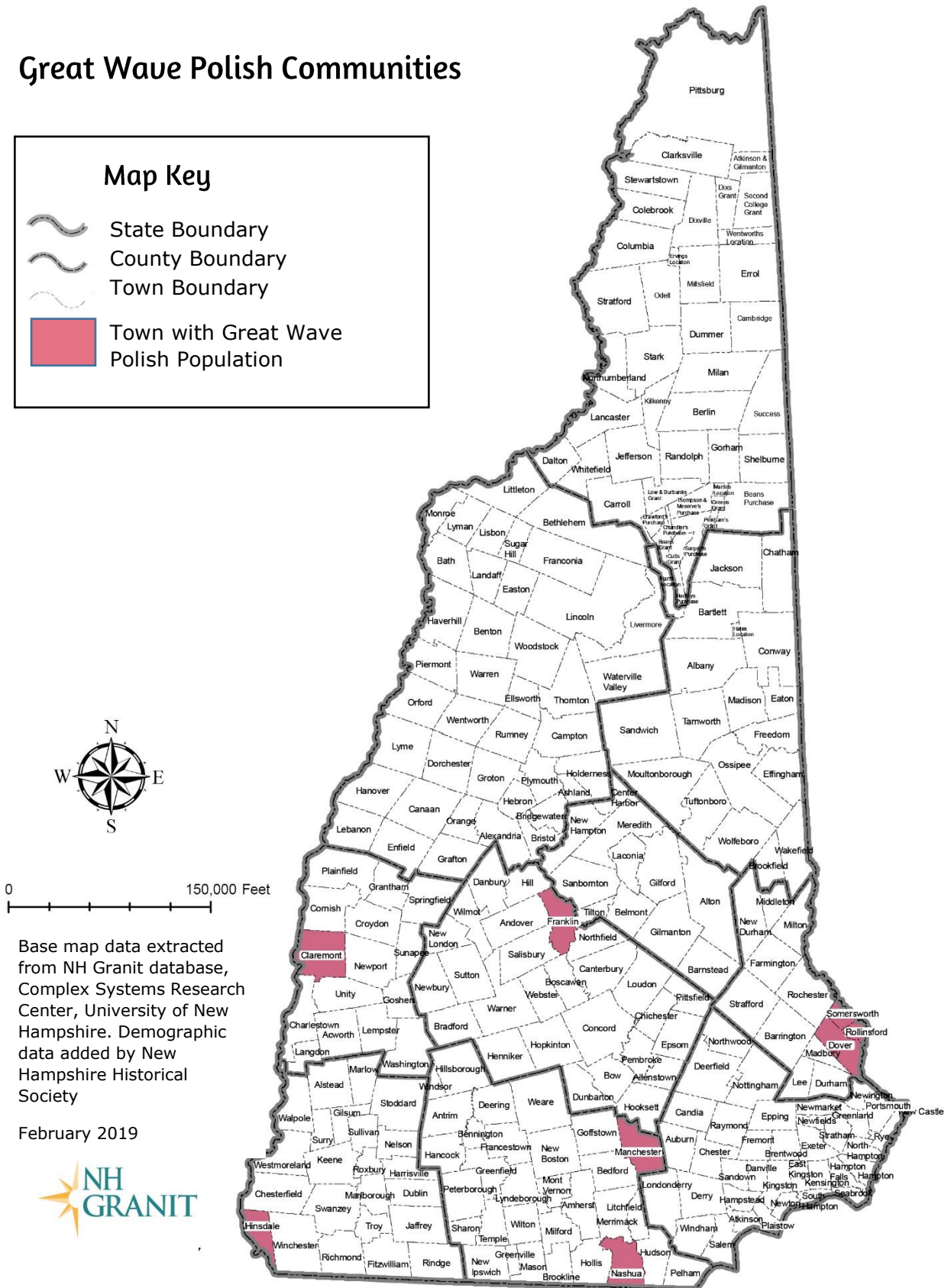
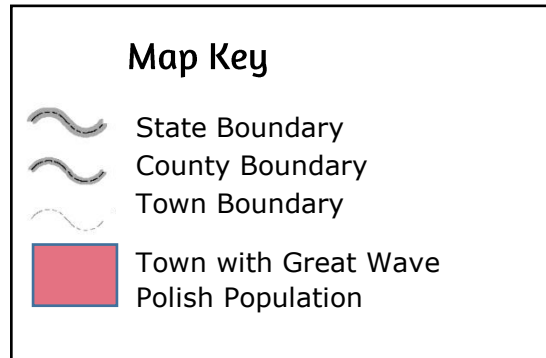
February 2019





Lesson 12.3: Mapping Jobs and Immigrants Groups

## Great Wave Polish Communities



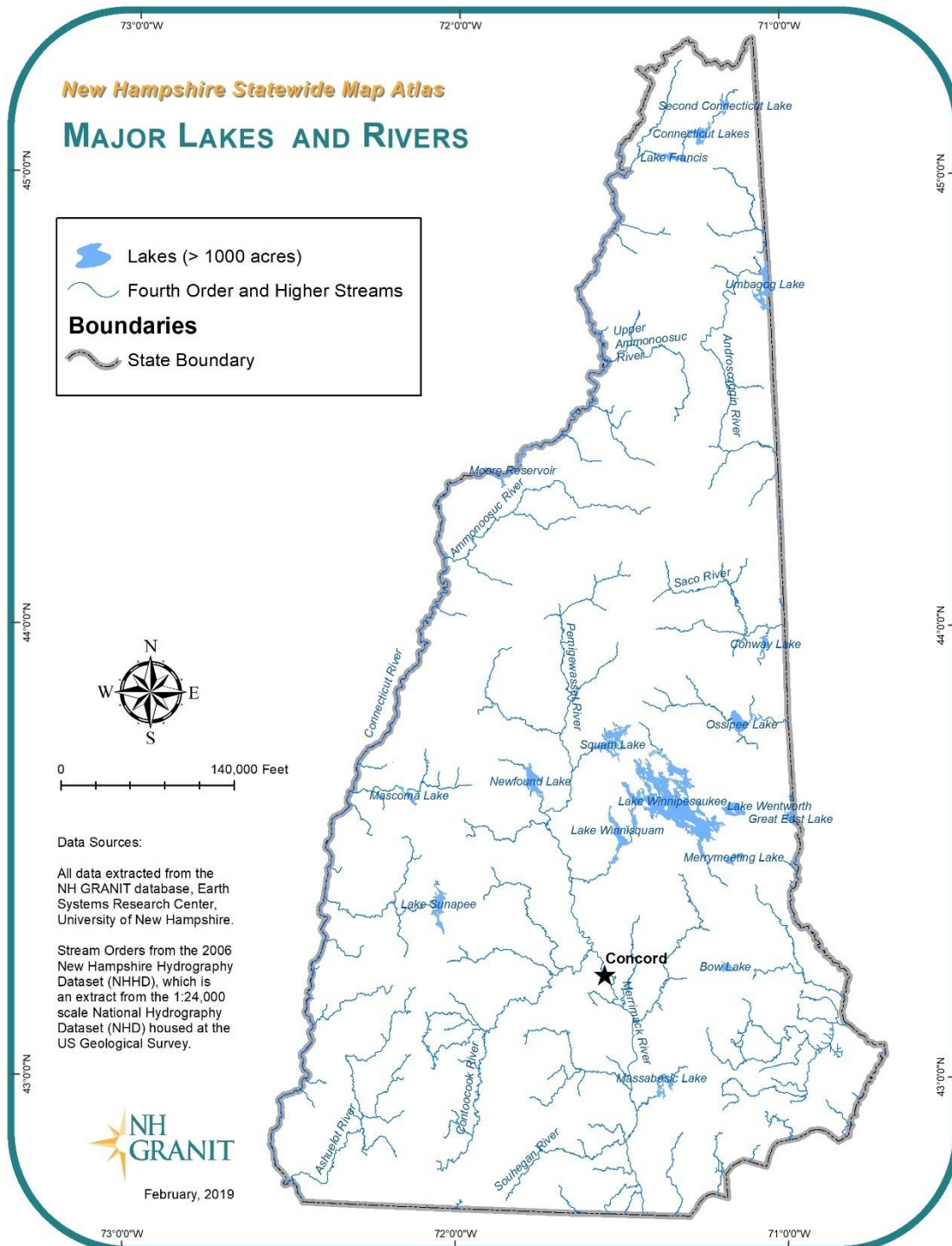


Lesson 12.3: Mapping Jobs and Immigrants Groups

Name \_\_\_\_\_

## Rivers and Industry in New Hampshire

Compare the map of New Hampshire rivers and lakes with your completed Industry Map to answer the questions.







Lesson 12.3: Mapping Jobs and Immigrants Groups

1. Which major 19th-century New Hampshire industries were located on or near a river?

2. Why do you think these industries needed to be located on or near rivers?





Lesson 12.3: Mapping Jobs and Immigrants Groups

Name\_\_\_\_\_

## Local Immigration History

Just as many immigrant families made specific choices about where they wanted to live, your family and people in your community made decisions about where they wanted to live in New Hampshire. In this activity, think of five questions to ask family or community members about why they chose to live in your home town. Write them on the lines. Then use the space beneath each question to write down any notes from your family or community members' answers.

1. \_\_\_\_\_

2. \_\_\_\_\_





Lesson 12.3: Mapping Jobs and Immigrants Groups

3. \_\_\_\_\_

4. \_\_\_\_\_

5. \_\_\_\_\_