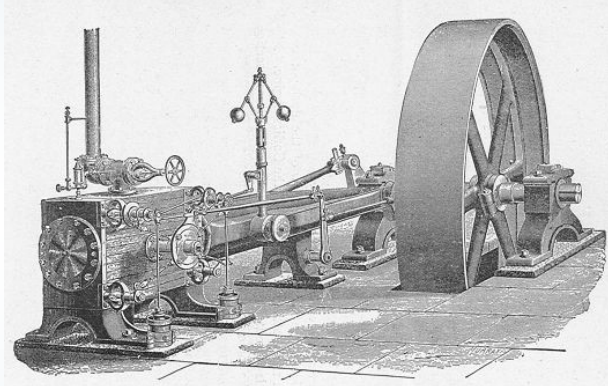


THE AMOSKEAG FLYWHEEL DISASTER OF 1891

Working in factories could be dangerous! Most factory accidents involved individual workers who got their fingers, hands, or arms caught in the machinery.

But on October 15, 1891, there was a big accident at the Amoskeag Manufacturing Company in Manchester. The Big Jumbo Steam Engine exploded, killing 3 workers and injuring 8 more.



The Big Jumbo Steam Engine was a Corliss engine, like the one in this picture. Its was a huge engine that produced enough energy to power machines in four mill buildings. The flywheel was spinning too fast that day. Eventually it spun so fast that it blew apart.



As the engine blew apart, pieces of metal flew through the air. Some of the pieces weighed as much as 1,000 pounds. They were scattered all over the millyard. Some damaged roofs and others broke windows. Some pieces flew so far they were even found on the other side of the Merrimack River! The building where the engine was collapsed.

The flywheel disaster was the worst industrial accident in the Amoskeag Company's history.