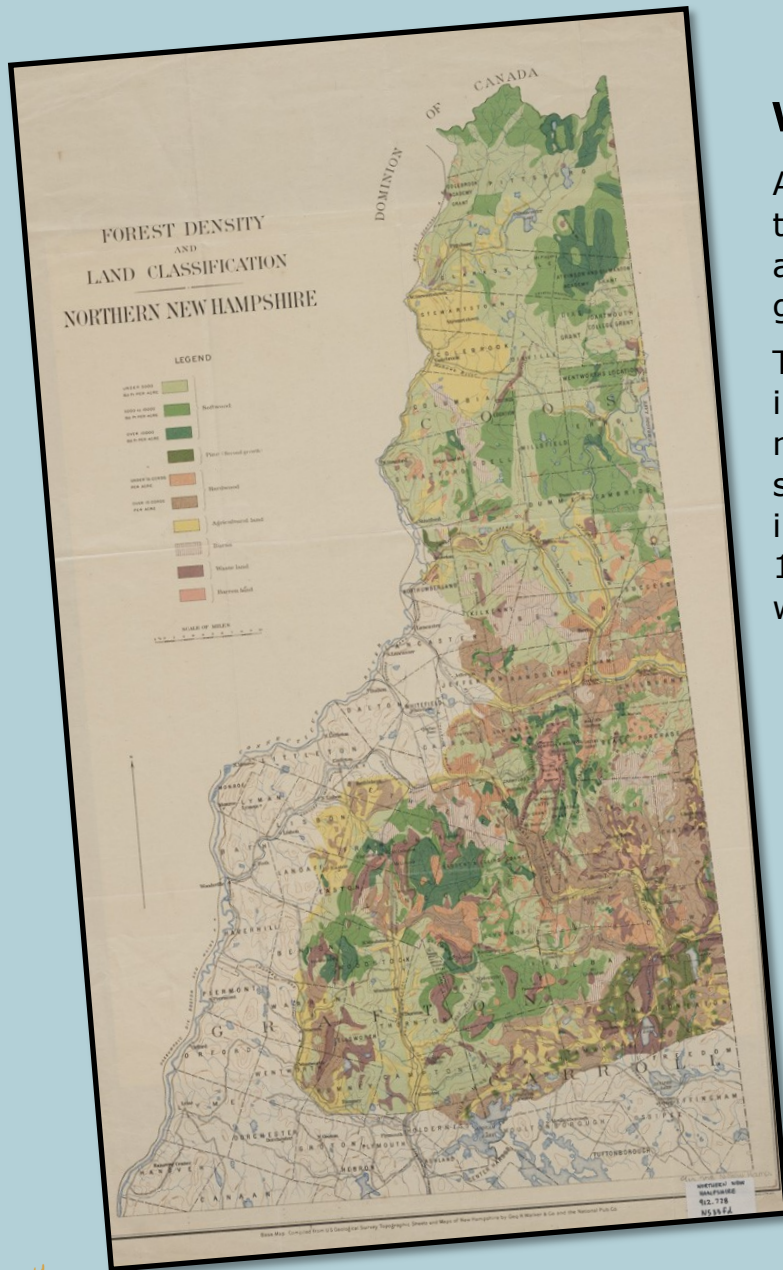


# FOREST DENSITY MAP



## What is a forest density map?

A forest density map shows how thick the forest is in a particular area and what types of trees grow there.

This map, which was created in 1894, is of the forests in northern New Hampshire. It shows how thick the forest was in this part of New Hampshire in 1894 and what types of trees were growing there.



## Fun Fact:

New Hampshire is the second most forested state in the United States. About 80% of the state is covered in trees.

Maine is the most forested state in the country, with 90% of it covered in trees.



## Notice & Wonder

- Which part of New Hampshire was the most heavily forested in 1894? Do you think that's still true today?
- Who would find a map like this useful?
- What other natural resources could be shown on a map like this one?