



Lesson: Who Lives in Fresh Water?

(To follow Amplify CKLA Grade 1, Knowledge 8: Animals and Habitats,
Lesson 7: Animals of the Freshwater Habitat)

At a Glance	In this lesson, students investigate animals that live in New Hampshire's freshwater habitats.
Primary Focus Objectives	<ul style="list-style-type: none">• Students will read non-fiction text about New Hampshire's freshwater habitats and two iconic species that live in them.• Students will analyze photographs to identify characteristics of New Hampshire's freshwater habitats.• Students will create a freshwater habitat collage with images from the lesson.
Formative Assessment	<ul style="list-style-type: none">• Habitat collage• Compare Habitats activity (to be done after Saltwater Lesson is complete)
Standards	<p>CCSS.ELA-LITERACY.SL.1.2 Ask and answer questions about key details in a text read aloud or information presented orally or through other media.</p> <p>CCSS.ELA-LITERACY.RI.1.2 Identify the main topic and retell key details of a text.</p> <p>CCSS.ELA-LITERACY.L.1.4 Determine or clarify the meaning of unknown and multiple-meaning words and phrases based on Grade 1 reading and content, choosing flexibly from an array of strategies.</p>
Materials	<ul style="list-style-type: none">• Focus Texts: Unit 1: New Hampshire Geography, Learn It! "Features of the Land," page 4.; Animal Fact Sheet: Loon; Animal Fact Sheet: Brook Trout• Map: New Hampshire Lakes and Rivers• Image Set: Freshwater Habitats in New Hampshire• "Freshwater Habitat Features" chart• Copies of infographics and image set; construction paper; scissors; glue• "Compare Habitats" worksheet• Optional: Freshwater Sensory Observations worksheet
Time Needed	Two 30-40 minute class sessions
Learning Activity	<ol style="list-style-type: none">1. Examine map of lakes and rivers. Project the New Hampshire Lakes and Rivers map and discuss it as a whole group. <i>(10 minutes)</i>2. Read the Focus Texts. As a whole group or in reading groups, read and discuss the Learn It! selection and infographics. <i>(30 minutes)</i>



- 3. Analyze the images.** Place the photos of freshwater habitats around the room. Give students time to note their observations on the chart and then discuss details as a whole group. *(20 minutes)*
- 4. Make a habitat collage.** Support students as they create a habitat for the brook trout or the loon by cutting out images and construction paper shapes and gluing them onto a base page. *(30 minutes)*
- 5. Compare.** After completing MxA Lesson: Who Lives in Salt Water?, students will compare New Hampshire saltwater habitats and freshwater habitats with a t-chart sort. *(15 minutes)*
- 6. Optional: Take a freshwater field trip.** Visit a freshwater habitat and guide students to record what they notice using their senses on the Freshwater Observation Sheet. *(Time will vary.)*



Educator Rationale and Answer Guide

Connection to Amplify

In this lesson, students will extend knowledge developed in Amplify CKLA Grade 1, Knowledge 8, Lesson 7: Animals of the Freshwater Habitat to New Hampshire's freshwater habitats. They read non-fiction text about the state's lakes, ponds, and rivers and learn about two important species that live in the state. Students locate the state's freshwater sources on a map and then analyze photographs of a variety of habitats. Throughout, the students discuss and record their observations in preparation for a comparison activity that is part of MxA Lesson: Who Lives in Salt Water?

Examine a map of lakes and rivers

Display or project the New Hampshire Major Lakes and Rivers map. Give students time to look closely at the network of lakes and rivers. Guide a group discussion about where in the state these sources of fresh water are located, what they are used for today, and which are closest to where students live. Connecting to their own experiences with freshwater habitats is important. Encourage sharing of personal experiences with New Hampshire bodies of water.

Read the Focus Text

Project on the screen the Learn It! selection for a whole group read aloud. If time allows, click on the image and the audio icon to learn more details about special freshwater habitats. The infographics about loons and brook trout provide more facts about two of New Hampshire's most iconic species and are appropriate for independent or reading group work.

This is a good place to pause if dividing the lesson across multiple sessions.

Analyze the images

Consider setting up stations for each image; students can rotate through the stations and discuss what they notice about the photographs with small groups. A chart is provided for students to complete while they look at the images. Or, project the chart and complete it as a whole group after they finish looking at the images.

Make a habitat collage

Make extra copies of each of the photographs and infographic pages. Provide students with a construction paper base and a variety of papers that might be cut to represent different features of a freshwater habitat. Ask students to decide whether their collage will be a home for a loon, a brook trout, or both. They should use details from the infographics to inform what will be in their images. Encourage them to cut out visual details from the photographs and infographics as well. Use glue to secure their design to the construction paper base. They should give a title to their habitat collage and label the features they included once they have glued everything in place.

Optional: Read Alouds

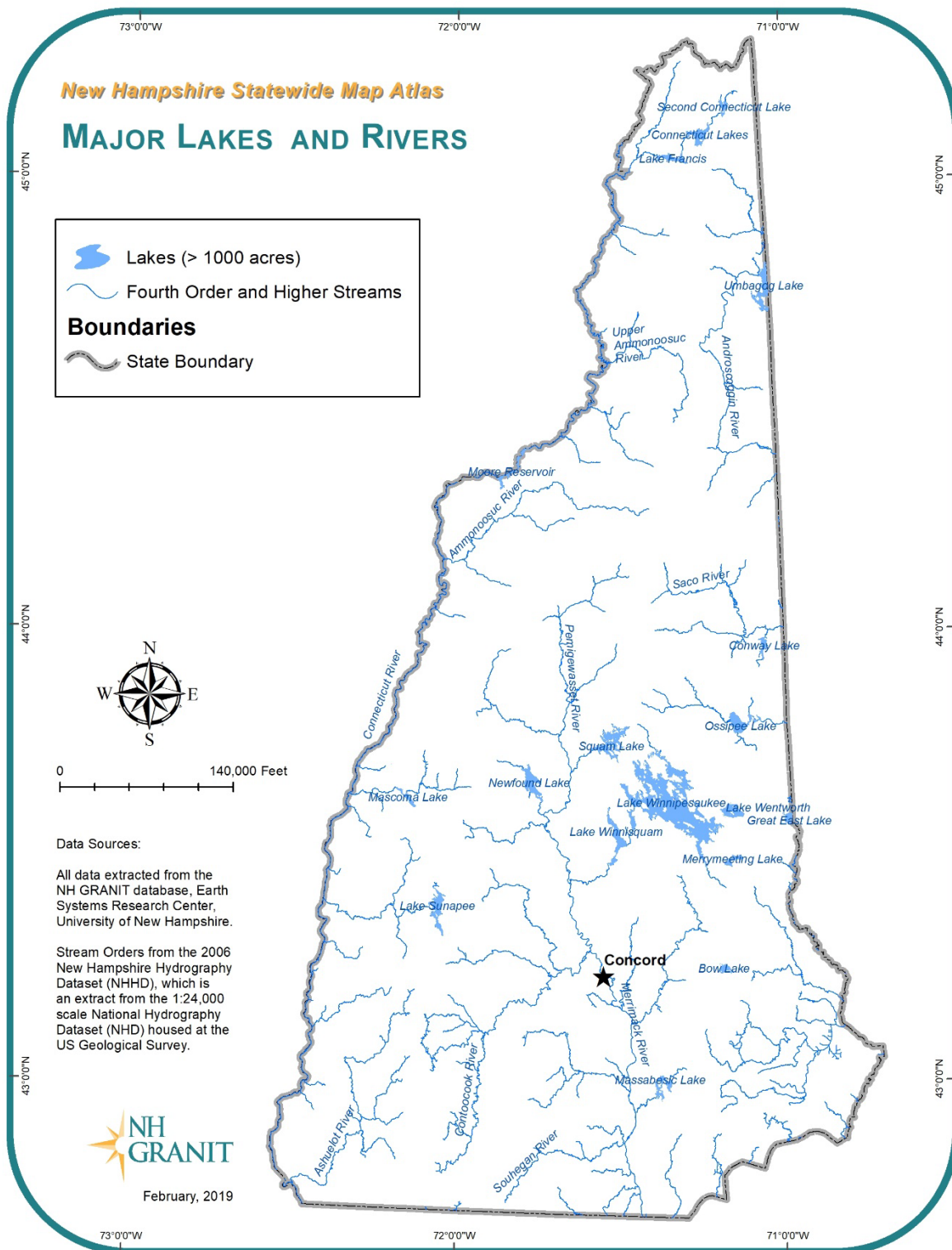
The following books can add to your discussions about freshwater habitats. The book *River* by Elisha Cooper explores one woman's journey down the Hudson River. She sees many animals that also live near New Hampshire's freshwater habitats. This book could allow for some good comparison discussions between New Hampshire and a place with similar examples of this type of habitat. The book *Over and Under the Pond* explores another freshwater habitat and has backmatter that shows different organisms found in ponds.

**Optional:
Freshwater habitat
field trip**

If a freshwater habitat exists near your school, consider taking the children to explore it. Or, visit one of New Hampshire's Audubon centers for a guided experience. By seeing freshwater habitats in person, students will be able to deepen their knowledge. The optional graphic organizer asks students to record their observations by focusing on their senses. Bringing along a guidebook will help you identify anything your students have questions about.

Compare habitats

This formative assessment should be done after both MxA Lesson: Who Lives in Fresh Water? and MxA Lesson: Who Lives in Salt Water? have been completed. The worksheet is included with both lessons for convenience. In this assessment, the students will sort and label image cards to demonstrate their understanding about the two types of water habitats.





Newfound Lake, Bristol New Hampshire. Source: Kari Allen



Hermit Lake, Sanbornton New Hampshire. Source: Kari Allen



Pond in Sanbornton, New Hampshire. Source: Kari Allen



Hermit Lake, Sanbornton New Hampshire. Source: Kari Allen



Stream in Sanbornton, New Hampshire. Source: Kari Allen



Freshwater Habitat Features

What kind of water source is shown?	
What types of trees are shown?	
What does the land around the water look like?	
What evidence of animals is shown?	



Saltwater Habitat

Freshwater Habitat



Habitat Cards

Cut out the cards. After you sort them into the columns, label each card.

